



Westside Community Schools

## Loveland Elementary

09.30.2025

## Community Meeting No. 4

Schematic Design Update

**BVH**  
ARCHITECTURE  
**pen**  
ARCHITECT LLC

- 
- **Introduction & Design Concept**
  - **Site & Building Plan Development**
  - **Exterior Design**
  - **Schedule & Next Steps**
  - **Questions?**

# Westside Community Schools: Guiding Design Principles

Create a building that **PRESERVES THE CULTURE OF ITS COMMUNITY**.

Design a **LEARNER-CENTERED BUILDING** that allows for showcasing and sharing of student work.

Create an environment that builds a **SENSE OF COMMUNITY** through purposeful utilization of space.

Design a facility with the understanding that the **EDUCATIONAL ENVIRONMENT EXTENDS BEYOND THE BUILDING**, to the site, and into the community.

Develop a building that will **EMBRACE COLLABORATIVE AND PERSONALIZED LEARNING**.

Design a **SAFE AND SECURE** facility for students and staff.



# Loveland Elementary:

## Design Goals

- **Respect Loveland Neighborhood**
  - Incorporate History
  - Unique Character
- **Optimize Site Layout & Access**
  - Work within Tight Site
  - Navigate Topography
  - Improve Traffic Flows
  - Drop-Off & Pickup
- **Dedicated Art, Music & Intervention Spaces**
- **Separate Gym & Cafeteria**
- **Introduce Project Based Learning (PBL) Areas**
- **Safety & Security**
- **Westside Community Design Standards**





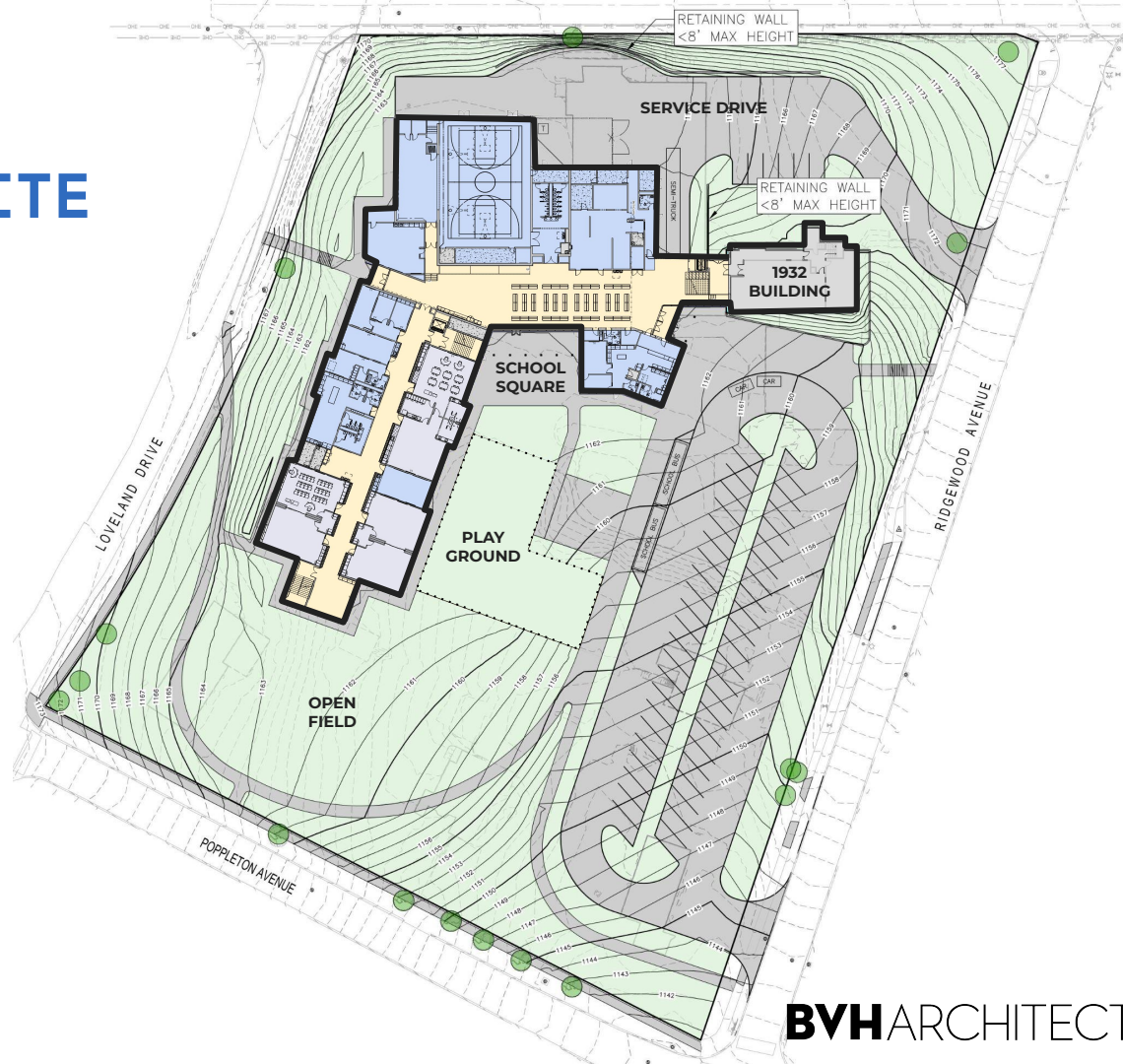
# Loveland: “Village Square” Concept



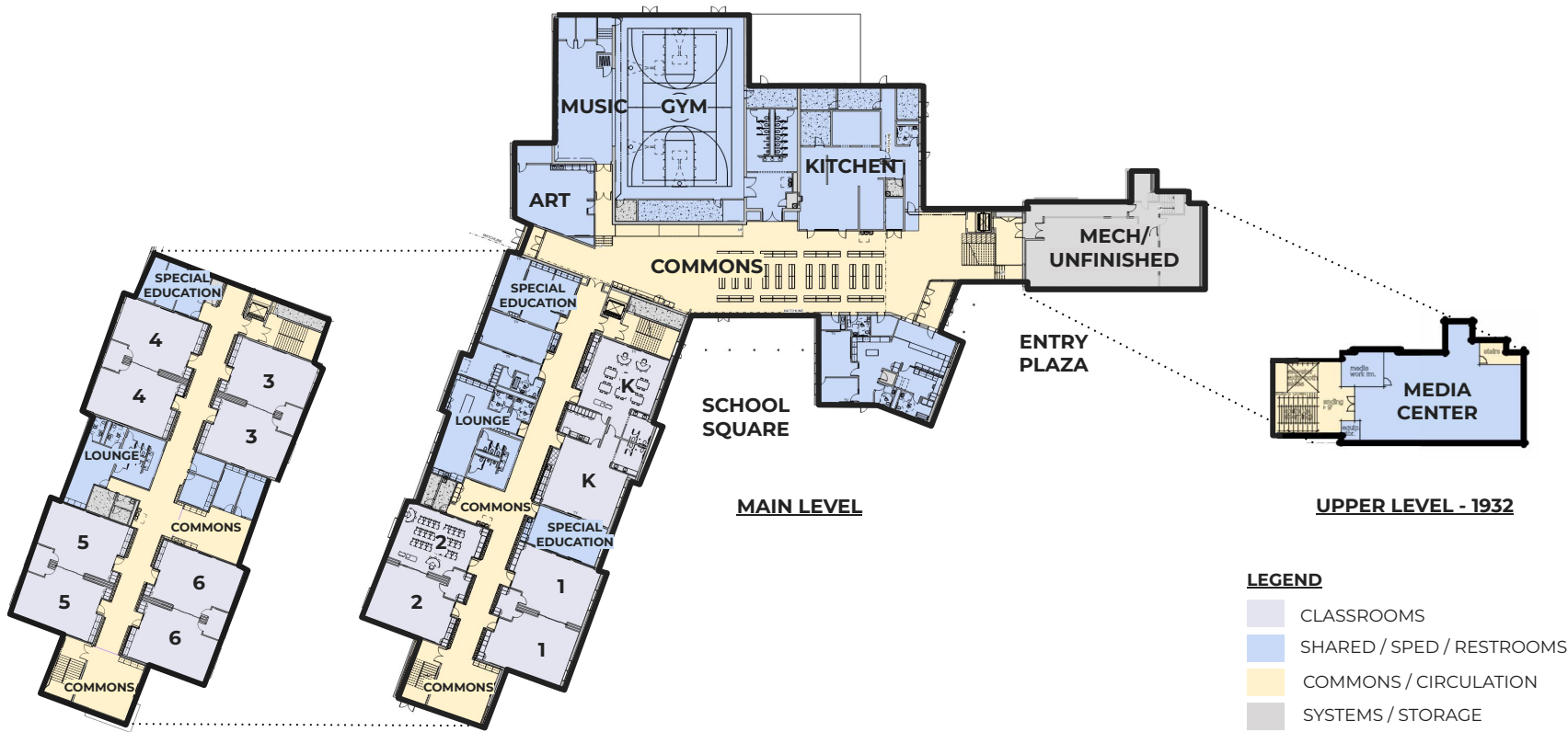
1. *New & old side by side*
2. *Common design elements and forms*
3. *Neighborhood scale*
4. *Gathering spaces for the school & community; connect indoor/outdoor*

concept image

# Loveland: SCHEMATIC SITE PLAN

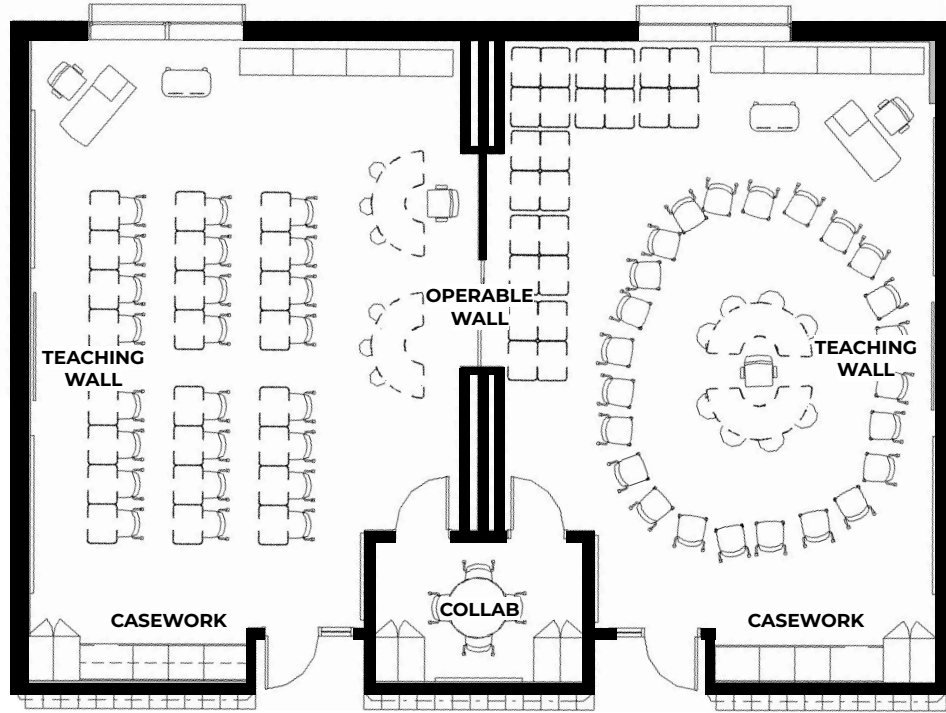


# Loveland: SCHEMATIC FLOOR PLANS

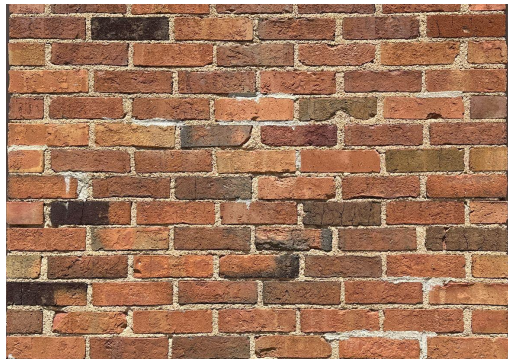




# Loveland: TYPICAL CLASSROOM LAYOUT



# Loveland: **EXISTING MATERIALS**



## **BRICK**

BODY & DECORATIVE



## **WADDLE & DAUB**

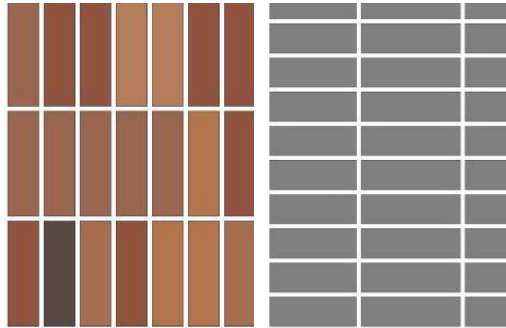
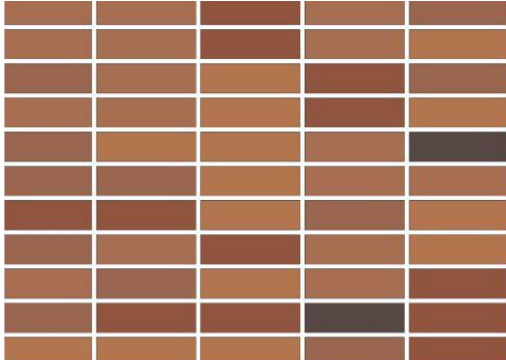
NEUTRAL & EXPRESSED  
STRUCTURE



## **ROOF & WINDOWS**

Complimentary Materials  
& Modular Windows

# Loveland: **NEW MATERIALS**



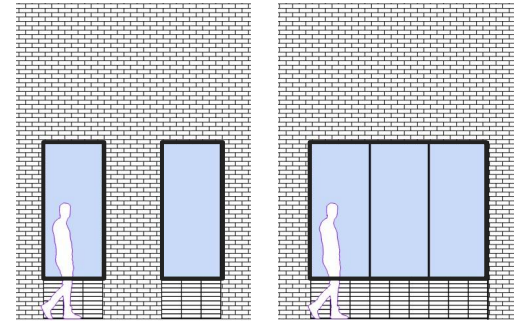
## **BRICK**

BODY & DECORATIVE



## **WADDLE & DAUB**

NEUTRAL & EXPRESSED  
STRUCTURE



## **ROOF & WINDOWS**

Complimentary Materials  
& Modular Windows



# Loveland: NEIGHBORHOOD VIEW



**VIEW FROM SOUTHEAST CORNER**

# Loveland: MAIN ENTRANCE



ENTRANCE PLAZA



# Loveland: ADMIN WING



**SOUTH COURTYARD**



# Loveland: WEST ENTRANCE



VIEW ALONG LOVELAND DR.

# Loveland: PACIFIC & LOVELAND DR



VIEW FROM PACIFIC STREET



# Loveland: PACIFIC LOOKING WEST



VIEW FROM PACIFIC STREET



# Loveland: AERIAL VIEW



**AERIAL PERSPECTIVE**

**BVH**ARCHITECTURE **pen**  
ARCHITECT LLC



# Loveland: AERIAL VIEW



**AERIAL PERSPECTIVE**

# LOVELAND SCHEDULE

---

## VALIDATE

→ SCHEMATIC DESIGN



AUG 29, 2025

**→ DESIGN DEVELOPMENT**

**NOV 14, 2025**

## INFORM

→ CONSTRUCTION DOCUMENTS

FEB 20, 2026

→ BIDDING & PERMITS

MAR-APR 2026

→ CONSTRUCTION

MAR 2026 → DEC 2027



## DESIGN DEVELOPMENT (DD)

---

Refinement of the design, **Design Development (DD)** documents more clearly define the building details - materials, floor-wall-roof assemblies, structural and MEP engineering details and coordination.

# DESIGN DEVELOPMENT (DD)

---

Deliverables for this phase include:

- **Site Plans:** Grading, parking, walks, landscaping, utilities, fields and playgrounds, fencing, signage, retaining walls, etc.
- **Building Plans:** All rooms and sizes set; reflected ceilings plans, partitions and doors, ceilings, code analysis complet
- **Building Elevations:** All materials, windows & doors, major dimensions.
- **Building and Wall Sections:** Exterior & interior partition types and assemblies, fire & smoke rated walls, etc.
- **Interior Materials & Casework:** Locations and configurations set
- **Structural Systems:** Foundations, steel & precast concrete plans and details
- **MEP Systems:** Determine specific equipment sizing, layout & zoning, duct/pipe distribution and chases.
- **Outline Specifications:** Material and systems details
- **Cost Estimate and Schedule:** updated

## DESIGN DEVELOPMENT (DD)

---

During Design Development, a Construction Manager will be brought on to the team during this phase to help advise on construction methods, schedule and budget. After the construction documents are complete, they will bid out the sub-contractor work and manage the construction process.



---

# Questions?

---

# Thank you!